

H301-EC-LG-UP-BL

Stage compatibility: fits on Leica Super Z Galvo Stage (SP5/SP8) on Upright Microscopes

- Part number of the objectives in use must be specified in purchase order

The chamber can fit:

- 35/60 mm Petri
- 1x3 in. / 1x2 in. chambered slides

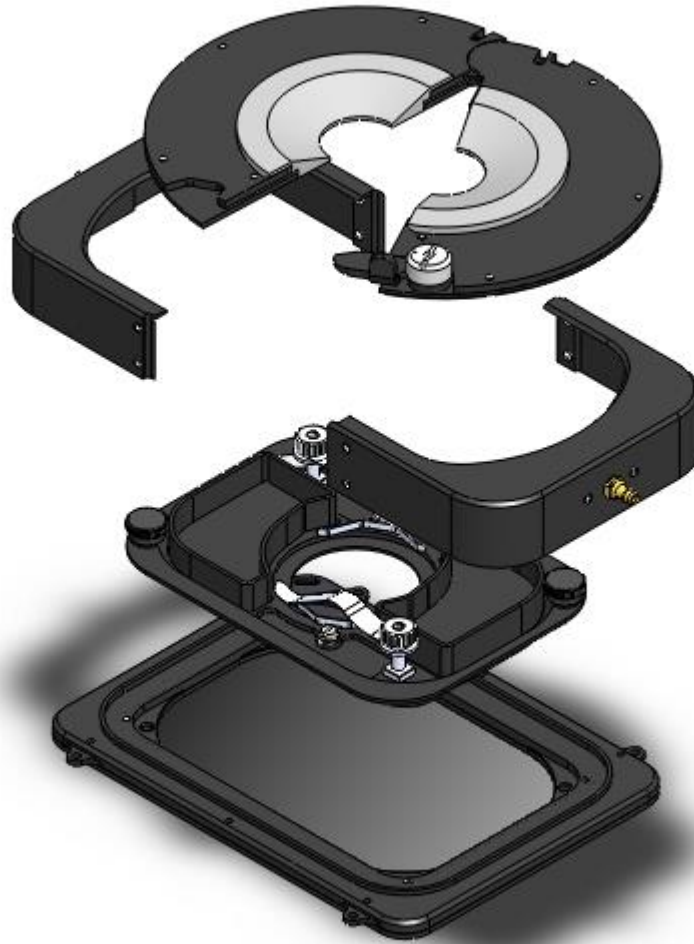
Features:

- Suitable for dipping lens
- Manageable chamber thanks to the opening of the lid to introduce the objective
- Magnets allow easy interchange chamber insert
- Magnetic locks hold Petri, Slides in correct position inside the chamber
- Perfusion holes: 12 channels for 2.0 mm O.D. tubings are available
- The chamber screws onto galvo Stage
- Chamber weight, 130 g.
- To control the humidity into the chamber humidity module is recommended: HM-ACTIVE



AVAILABLE INSERTS

H301-EC-LG-UP-1x35	#1 35mm Petri-dish
H301-EC-LG-UP-1xGS	#1 1x3 in. chamber slide
H301-EC-LG-UP-1xLABTEK	#1 Lab-Tek 1x2 in. chambered cover glass
H301-EC-LG-UP-1xLABTEK II	#1 Lab-Tek II 1x2 in. chambered cover glass
H301-EC-LG-UP-1x60	#1 60mm Petri-dish



H301-EC-LG-UP-BL

H301-EC-LG-UP-BL - Components



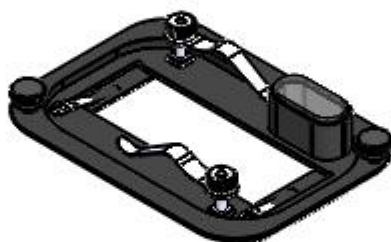
H301-EC-LG-UP-1x35

For #1 35mm petri-dish



H301-EC-LG-UP-1x60

For #1 60mm petri-dish



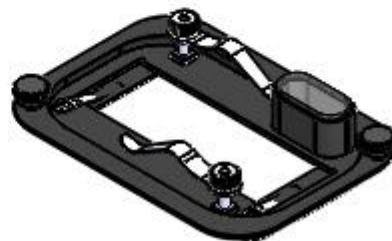
H301-EC-LG-UP-1xLABTEK II

#1 Lab-Tek II 1"x2" chambered cover glass



H301-EC-LG-UP-1xGS

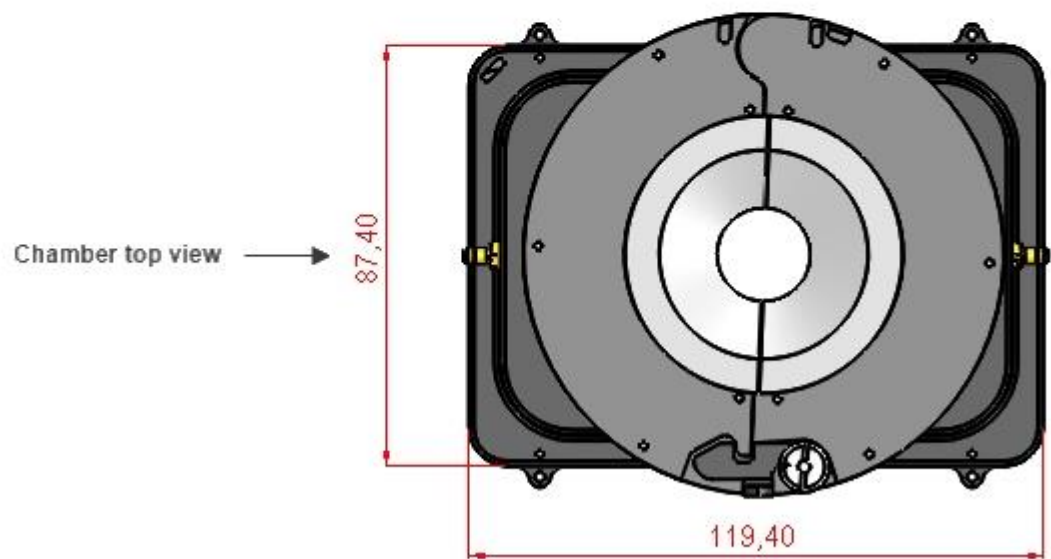
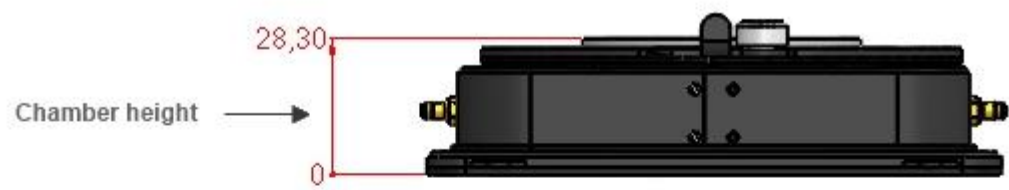
For #1 1"x3" chamber slides slide



H301-EC-LG-UP-1xLABTEK

For #1 Lab-Tek-1"x2" chambered cover glass

H301-EC-LG-UP-BL - Available inserts



H301-EC-LG-UP-BL - Dimensions