

## H301-OLYMPUS-IX-SUSP

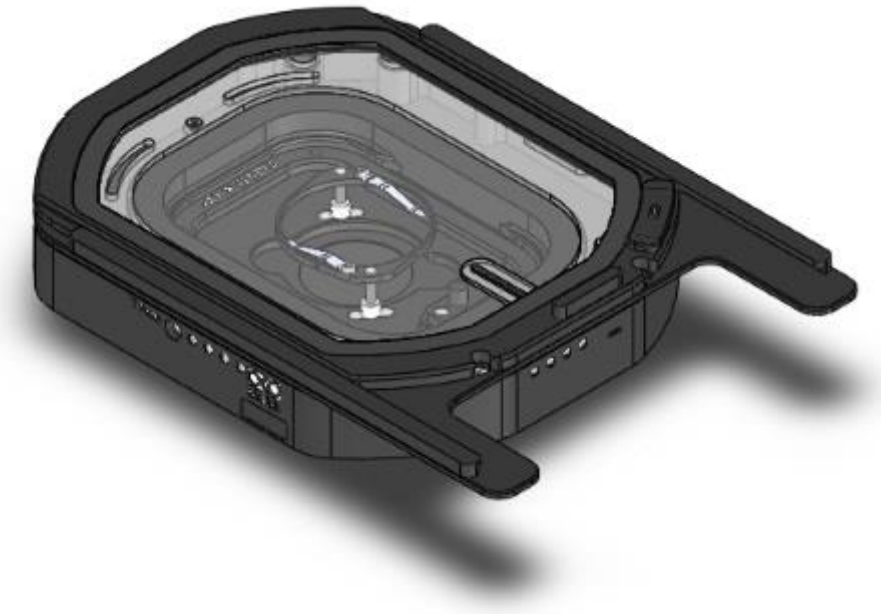
**Stage compatibility:** screws onto IX-SUSP, GX-SVR, GX-SFR, BX3-SSU, IX2-SFR, IX2-SVL-2 - comes with Sliding Lid

**Magnetic inserts allow to use:**

- 35/60 mm Petri
- 1x3 in. / 1x2 in. chambered slides

**Features:**

- Sliding lid for easy pipetting
- Optional lids available for Kohler Illumination, Laser Safety, Injection during imaging
- Flexible chamber height thanks to the removable chamber riser and the optional Koheler Lid
- Magnets allow easy interchange of chamber inserts
- Magnetic locks hold Petri and Slides in correct position inside the chamber
- Perfusion holes: 8 channels for 2.5mm O.D. tubings are available in chamber riser.



### AVAILABLE INSERTS

<b>1x35-M single</b>	#1 35mm Petri-dish
<b>1xGS-M-single</b>	#1 1x3in. chamberslide
<b>1xLABTEK-M-single</b>	#1 Lab-Tek 1x2 in. chambered cover glass
<b>1xLABTEK-II-M-single</b>	#1 Lab-Tek II 1x2 in. chambered cover glass
<b>1x60-M-single</b>	#1 60mm Petri-dish

### AVAILABLE LIDS

<b>H301-KOEHLER LID-2</b>	Glass lid that reduces the height of the chamber and allows to work under Koehler illumination. Minimum condenser working distance (without chamber riser): 22mm
<b>H301-INJECTION-LID-2</b>	Glass lid with two small openings (sealed with flexible plastic) to allow injection or permanent access to the specimen. Compatible only with specimen holder 1x35

**H301-LASER-INTERLOCK-LID-2**

Glass lid with a safety switch that connects to the laser box.  
The switch turns off the laser, when the lid is lifted.  
Compatible only with specimen holder 1x35

**Ordering Info****H301-OLYMPUS-IX-SUSP****1x35-M single**

H301-OLYMPUS-IX-SUSP with Sliding Lid



Ordering Info
H301-NIKON-TI-SR -2
H301-KOEHLER-LID
1x35-M single

H301-OLYMPUS-IX-SUSP with Koehler Lid



**H301-KOEHLER-LID-2**



**H301-LASER INTERLOCK-LID-2**

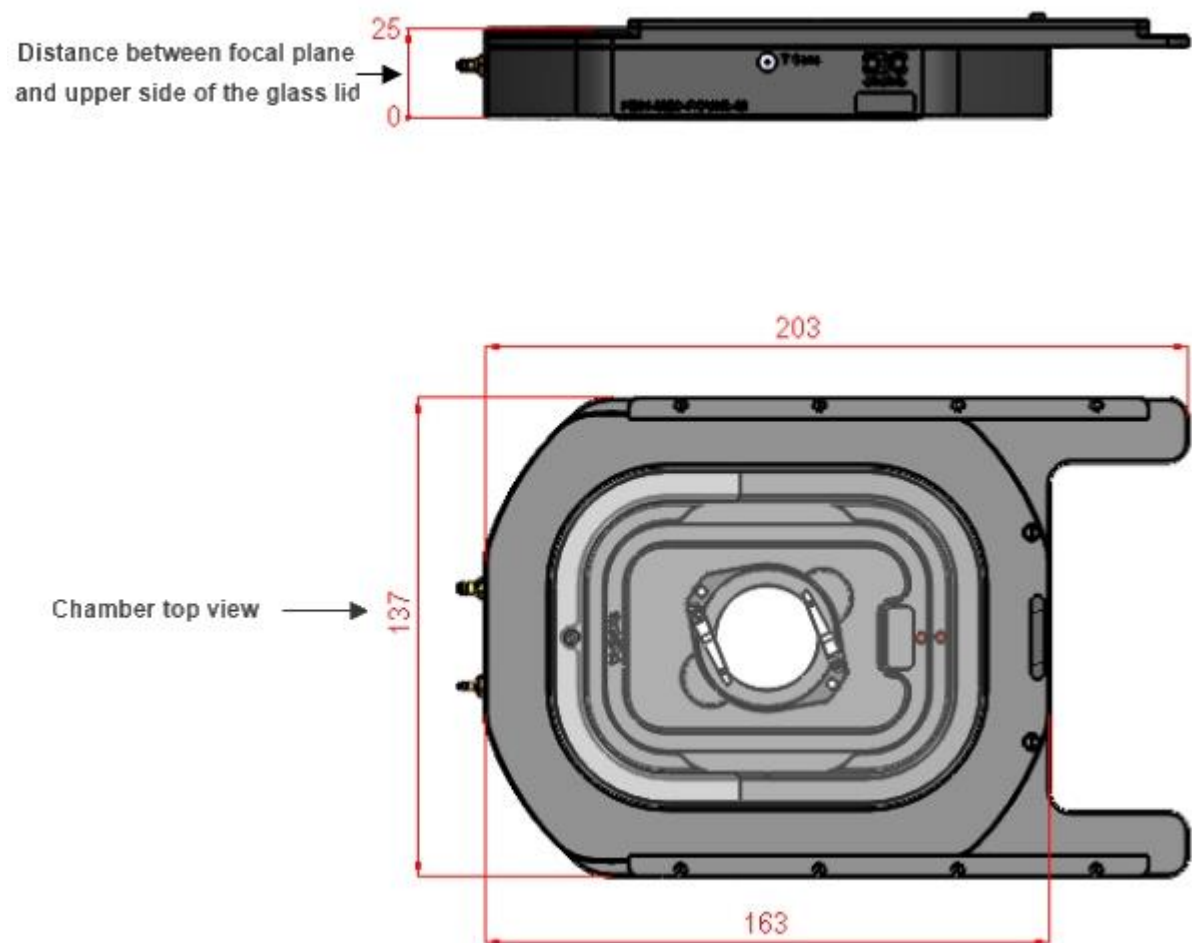


**SLIDING LID**

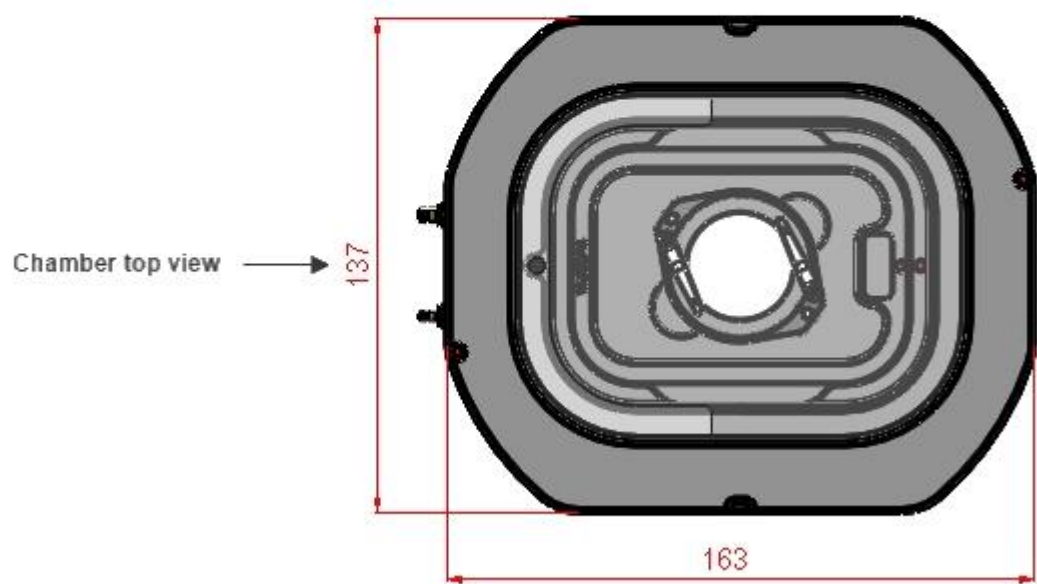
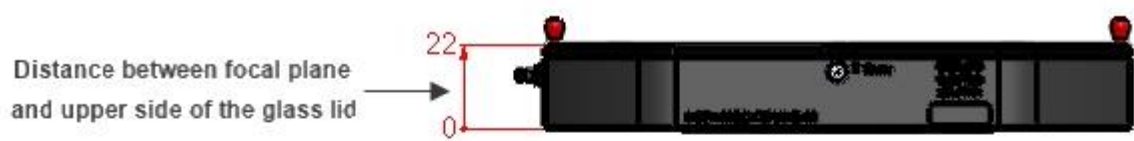


**H301-INJECTION-LID-2**

H301-OLYMPUS-IX-SUSP - Available Lids



H301-OLYMPUS-IX-SUSP- Dimensions with Sliding Lid



H301-OLYMPUS-IX-SUSP- Dimensions with Koehler Lid



**1x35-M single**  
For #1 35mm petri-dish



**1x60-M single**  
For #1 60mm Petri-dish



**1xLABTEK-M single**  
For #1 Lab-Tek 1"x2" chambered cover glass



**1xGS-M single**  
For #1 1"x3" chamber slide



**1xLABTEK-II-M single**  
For #1 Lab-Tek II 1"x2" chambered cover glass

H301-OLYMPUS-IX-SUSP - Magnetic Inserts