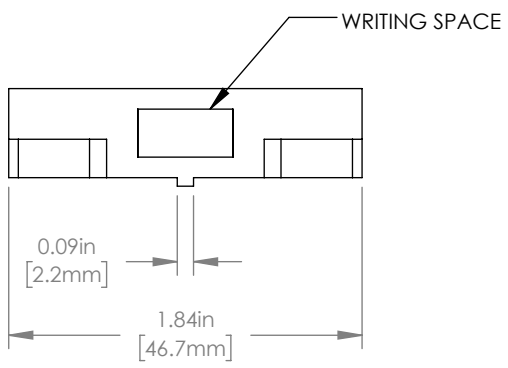
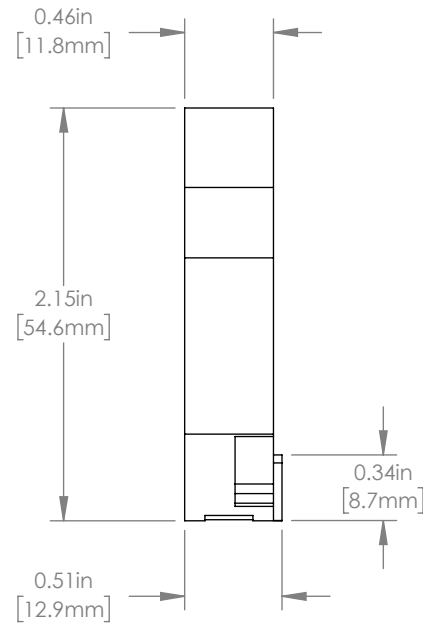
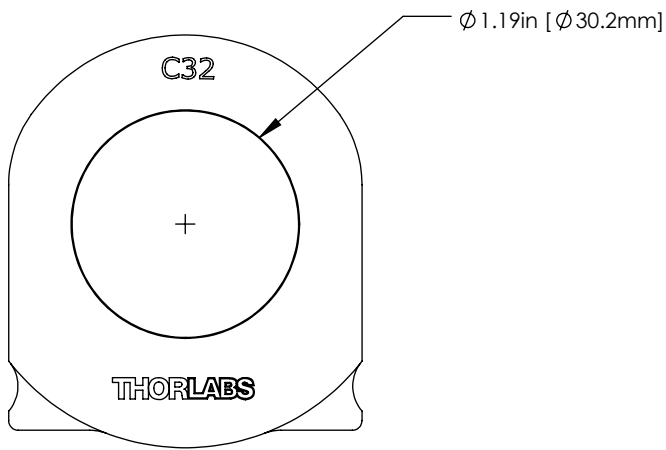


NOTES/SPECIFICATIONS:

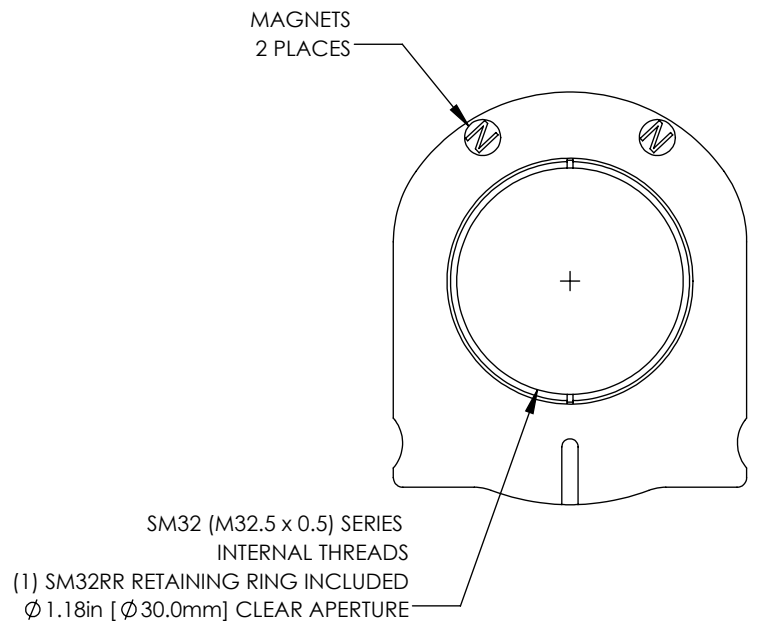
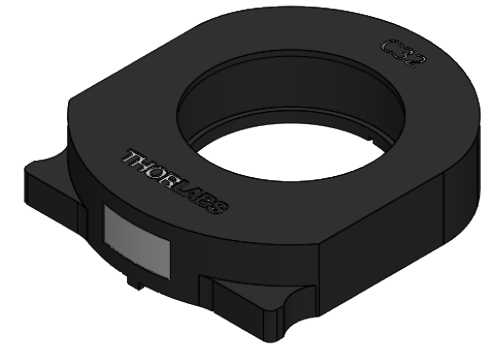
1. NUMERICAL APERTURE: 0.78NA
2. RECOMMENDED OBJECTIVE MAGNIFICATION: 10X* - 100X
*4X COMPATIBLE USING C4X
3. WORKING DISTANCE: 6.6mm
4. COATING: MgF_2 COATING AT 550nm, $R_{\text{avg}} < 2\%$ from 400 to 850nm
5. AXIAL COLOR: $< 25\mu\text{m}$ FROM 450nm to 700nm


FOR INFORMATION ONLY
NOT FOR MANUFACTURING PURPOSES

DRAWING PROJECTION			 www.thorlabs.com	
NAME	DATE			
DRAWN	AG	3/NOV/17	LWD CONDENSER, 0.78NA	
APPROVAL	GT	3/NOV/17	MATERIAL	
COPYRIGHT © 2017 BY THORLABS			N/A	
VALUES IN PARENTHESIS ARE CALCULATED AND MAY CONTAIN ROUND OFF ERRORS			ITEM #	APPROX WEIGHT
			CSC2001	0.27 kg



FOR INFORMATION ONLY
NOT FOR MANUFACTURING PURPOSES



DRAWING PROJECTION			 www.thorlabs.com TRAY WITH M32 THREAD, COMPATIBLE WITH CSC2001	
	NAME	DATE		
DRAWN	AG	3/NOV/17	MATERIAL	
APPROVAL	GT	3/NOV/17		
COPYRIGHT © 2017 BY THORLABS			N/A	
VALUES IN PARENTHESIS ARE CALCULATED AND MAY CONTAIN ROUND OFF ERRORS			ITEM #	APPROX WEIGHT
			CSC2001	0.10 kg